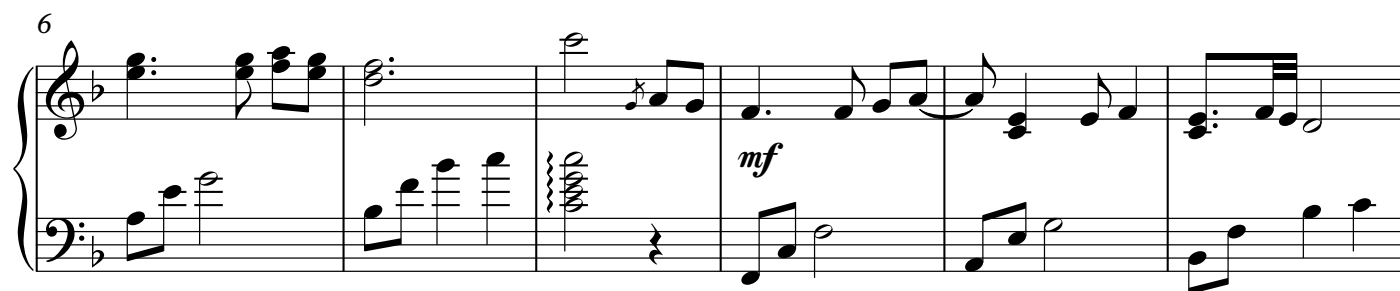
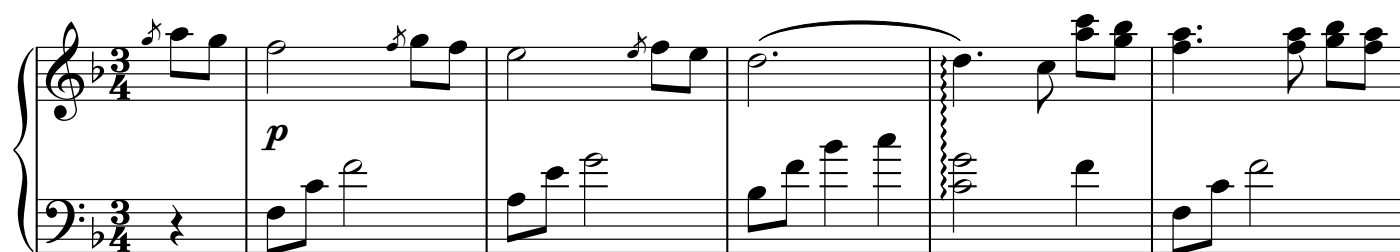


# 你的倒影

梁文福



28

Measures 28-32 of a musical score in B-flat major. The right hand features a melody with eighth and sixteenth notes, including a trill in measure 30. The left hand provides a steady eighth-note accompaniment. A key signature change to C major occurs at the start of measure 33.

33

Measures 33-38 of the musical score. The right hand continues the melodic line with various ornaments and trills. The left hand maintains the eighth-note accompaniment pattern.

39

Measures 39-43 of the musical score. The right hand features a series of chords and moving lines. The left hand continues the eighth-note accompaniment.

44

Measures 44-48 of the musical score. The right hand has a more complex texture with many chords. The left hand continues the eighth-note accompaniment. A *rit.* (ritardando) marking appears in measure 47.

49

Measures 49-54 of the musical score. The right hand features a series of chords and moving lines. The left hand continues the eighth-note accompaniment. An *a tempo* marking appears in measure 49.

55

Measures 55-59 of a musical score. The key signature has one flat (B-flat). Measure 55 features a complex treble staff with multiple beamed sixteenth notes and a bass staff with a single eighth note followed by a quarter rest. Measures 56-59 continue with various rhythmic patterns, including eighth and sixteenth notes, and some chords. Measure 56 has a key signature change to two sharps (F# and C#).

60

Measures 60-64 of a musical score. The key signature has two sharps (F# and C#). Measure 60 has a treble staff with a half note chord and a bass staff with a half note. Measures 61-64 continue with eighth and sixteenth notes, and some chords. Measure 64 ends with a double bar line.

65

Measures 65-69 of a musical score. The key signature has one flat (B-flat). Measure 65 features a treble staff with a half note chord and a bass staff with a half note. Measures 66-69 continue with eighth and sixteenth notes, and some chords. Measure 69 ends with a double bar line.

70

Measures 70-73 of a musical score. The key signature has one flat (B-flat). Measure 70 features a treble staff with a half note chord and a bass staff with a half note. Measures 71-73 continue with eighth and sixteenth notes, and some chords. Measure 73 ends with a double bar line.

74

Measures 74-77 of a musical score. The key signature has one flat (B-flat). Measure 74 features a treble staff with a half note chord and a bass staff with a half note. Measures 75-77 continue with eighth and sixteenth notes, and some chords. Measure 77 ends with a double bar line.

78

*rit.* *a tempo*

82

86

*rit.* *a tempo*

90

95

100

rit.

This system contains measures 100 through 103. Measure 100 begins with a treble clef, a key signature of one flat, and a 4/4 time signature. It features a melodic line in the treble and a bass line in the bass. Measure 101 continues the melodic and bass lines. Measure 102 is marked with a 'rit.' (ritardando) and features a 4/4 time signature. Measure 103 is marked with a 3/4 time signature and features a melodic line in the treble and a bass line.

104

This system contains measures 104 through 107. Measure 104 begins with a treble clef, a key signature of one flat, and a 4/4 time signature. It features a melodic line in the treble and a bass line in the bass. Measure 105 continues the melodic and bass lines. Measure 106 is marked with a 4/4 time signature and features a melodic line in the treble and a bass line. Measure 107 is marked with a 3/4 time signature and features a melodic line in the treble and a bass line.